

Samoa Industrial Waterfront Transportation Access Plan

- Funded \$250,000 Transportation Grant
- Connecting for Federal Highway Designation



Proposal to purchase Freshwater Pulp Mill



**Freshwater Pulp (Evergreen Pulp) Mill
before shutdown in 2010**



PAST

- Operated 45 Years
- 235 Jobs
- 200,000 Tons of Cargo yearly
- 1st West Coast chlorine free
- \$1 Billion replacement cost

PRESENT

**Demolition and
Clean up
Started in 2011**



Multi-Purpose Public Dock

- Deep Water Access- Natural Scouring
- Open Access to all Shippers
- General Cargo-heavy load capacity dock
- Access to 100 Acres of Upland Property
- Access to Warehouse Storage Facility
- Connected to Federal Highway System
- Industrial Zoned with low off-site impacts



BERTH 2- Provides Best Opportunity





© 2012 Google

Date: 8/23/2012

40° 48.327' N 124° 11.623' W elev 24 ft

Goog

Eye

Opportunity Purchase

- All parcels 156 acres
- All Buildings 250,000 sq. ft.
- 30 million gal/day water treatment system
- 1.5 miles of ocean outfall pipe
- All necessary road easements
- Accept all above ground hazardous waste

Potential Uses of Property and Buildings

- Wood Chip and Hog Fuel Export
- Log and Lumber Export
- General Cargo- Domestic Barge
- Bio-Char-Pellet Mill Facility for Export
- Indoor Aquaculture and Research
- Wave Energy Buoy Manufacture
- Offshore Wind Turbine Manufacture

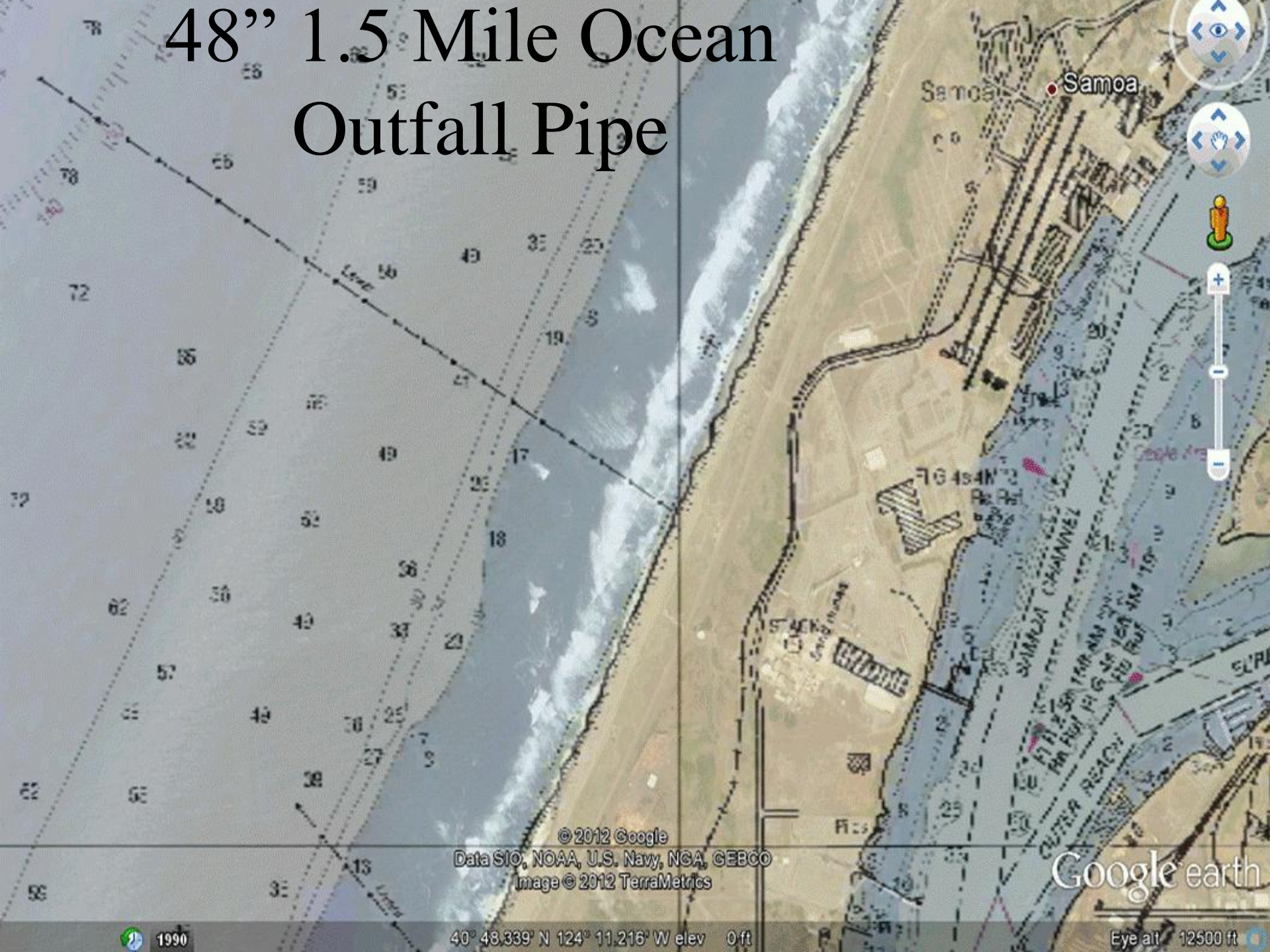
30 Million Gallon/Day Water Clarification System



Potential Uses of Water Clarifier

- Fresh Water Aquaculture and Research
- Water Export, International and Domestic
- Water Cooling Industries- Data Centers
- Agriculture Industries-Maraschino cherry
- Food Industries-Bottled water-beer
- Industrial Manufacturing- Dry wall
- Energy Production- Pressure Retarded Osmosis

48" 1.5 Mile Ocean Outfall Pipe



Potential Uses of Ocean Outfall

- Aquaculture Discharge & Intake
- Power Plant Hot Water Discharge
- Wave Energy Power Conduit
- Fiber Optic Cable Landing Conduit
- Domestic Grey water Discharge

Pulp Mill is ready for Redevelopment



**Freshwater Pulp Mill
during pulp production**

**Freshwater Pulp Mill
after clean up**

